



# How to use floating licences from a network database: information for users

PHYS01d

## Introduction

This document explains how to use a floating licence from a configured **network floating licence database** for concurrent use of Physibel applications.

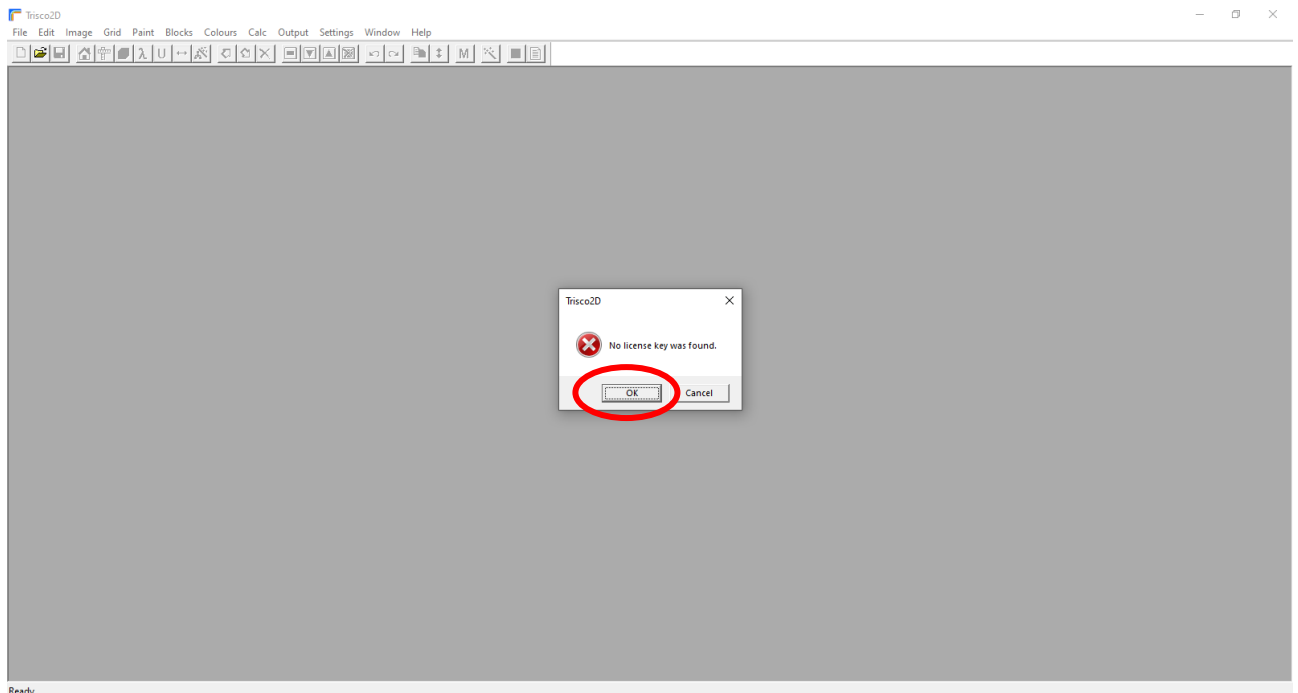
The network floating licence database **must** be configured according to “How to set up and manage a network floating licence database: information for admins” **before** the information in this document applies.

Alternative licence options, not discussed in this document are: stand-alone (software licence or hardware key) and cloud-based floating (software licence).

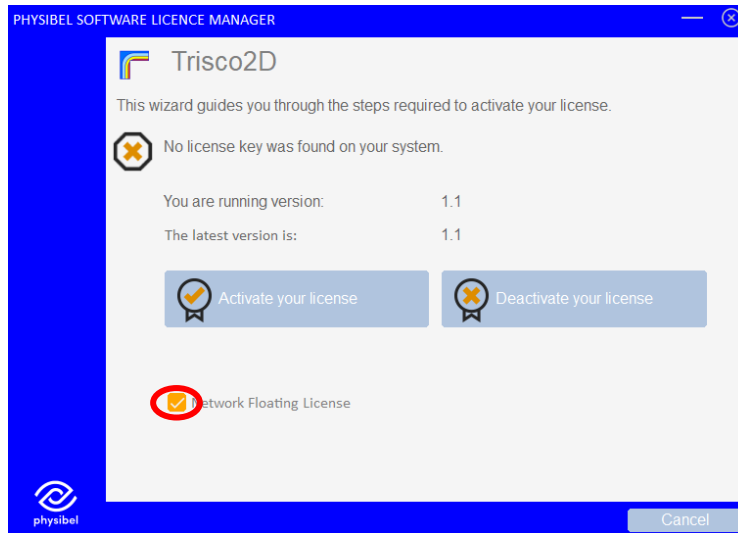
## First log-in to network floating database

After first installation of the application, the user needs to log in to an already set up network floating licence database.

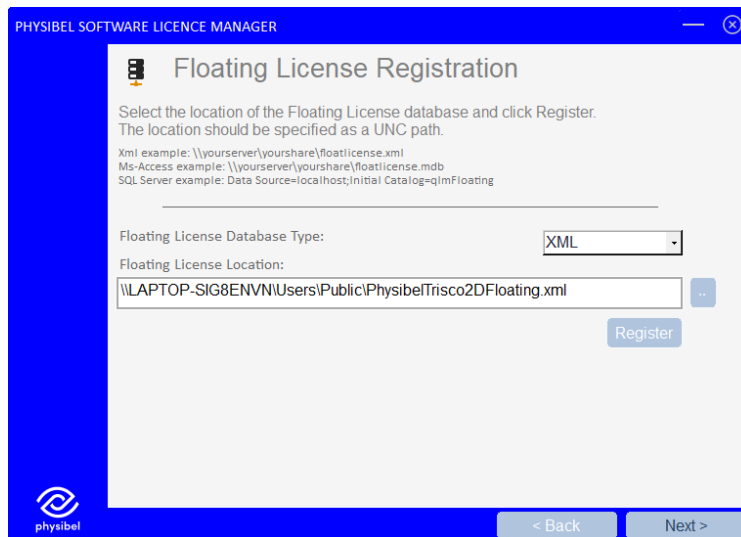
When first opening the application, the user will be notified that no software licence key was found on this computer. Press ‘OK’ to activate the licence.



The **Software Licence Manager** will open automatically and prompt the user to activate the licence. Make sure to check the box for activation of a network floating Licence.



You can browse to the location where the network floating database is stored and register this location.



Next time the application is opened, it will automatically retrieve a floating licence from the database (if available). The floating database needs to be reachable when opening the Physibel application, otherwise an error message will be given.

### Checking out a licence for offline use

A user can check out a floating licence in order to use the Physibel application without access to the floating database from the menu: *Help* → *Check out/in floating licence...* This is limited to a period of 72 hours.

### Physibel application updates<sup>1</sup>

Users of a network floating licence should always be on the same major and minor version for which the floating licence database is configured (though a difference in enhancement version is allowed). When updating to a newer version, the database should be updated first by the admin on the Master computer<sup>2</sup>, after which all users can update the Physibel application to this version.

<sup>1</sup> See "How to update to a newer version" (PHYS01g) for more information

<sup>2</sup> See "How to set up and manage a network floating licence database: information for admins" (PHYS01c)