

### What are colours within the Physibel software?

Colours are the basic constituents of any model within all Physibel programs.

Colours are defined in the **Colours window** and can be of different types (see manual for complete list):

- Material (MATERIAL)
- Boundary condition (BC\_SIMPL,...)
- Cavity (EQUIMAT, TRANSMAT,...)
- ...

### Colour database

The Physibel **colour database** is a set of predefined colours which are easily accessible from within the Physibel programs: *Colours* → *List All* or *List Defined*.

A default colour database is provided when the Physibel software is installed.

The colour database can be adjusted by the user. It is advisable to add frequently used colours to the colour database for efficient use of the software.

The maximum number of predefined colours is 256.

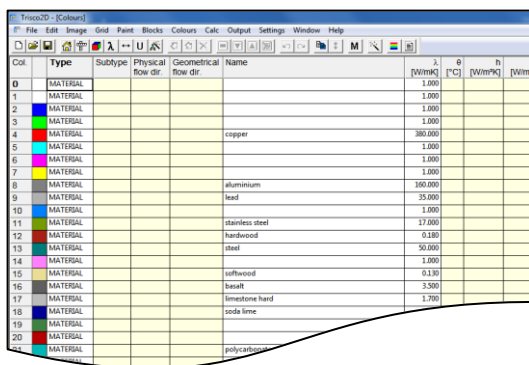
### How to modify the colour database

The colour database is directly accessible from within a project: *File* → *Open Colour Database*<sup>1</sup>.

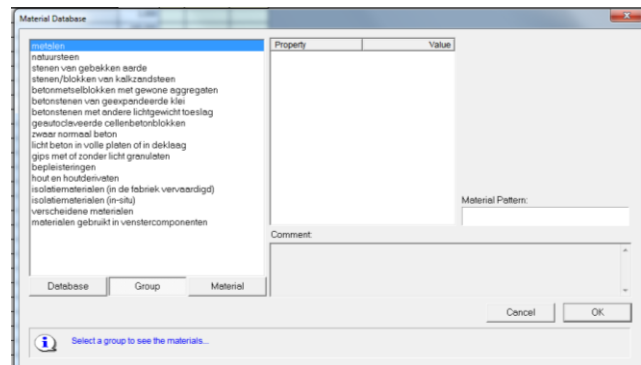
In the colour database the user can define colours manually by typing the data in the desired colour in the **Colours window**, either by overwriting an existing colour or by using a free colour.

It is also possible to load material properties from a material database into the colour database. Select a free colour or overwrite an existing colour (left mouse button) and load the desired material properties from the material database: *Colours* → *Load Material...*

After saving the adjusted colour database, it will be available in any new project.



Col	Type	Subtype	Physical flow dir	Geometrical flow dir	Name	λ [W/mK]	α [°C]	e [W/m²K]	h [W/m²K]	ρ [W/m²K]
0	MATERIAL					1,000				
1	MATERIAL					1,000				
2	MATERIAL					1,000				
3	MATERIAL					1,000				
4	MATERIAL				copper	380,000				
5	MATERIAL					1,000				
6	MATERIAL					1,000				
7	MATERIAL					1,000				
8	MATERIAL				aluminium	160,000				
9	MATERIAL				lead	35,000				
10	MATERIAL					1,000				
11	MATERIAL				stainless steel	17,000				
12	MATERIAL				hardwood	0,180				
13	MATERIAL				steel	50,000				
14	MATERIAL					1,000				
15	MATERIAL				softwood	0,110				
16	MATERIAL				brass	3,500				
17	MATERIAL				limestone hard	1,700				
18	MATERIAL									
19	MATERIAL									
20	MATERIAL									
21	MATERIAL				polycarbonate					



Left: Colour database and right: Material databases

<sup>1</sup>The colour database is stored in :

- In BISCO v12: C:\Users\...\AppData\Roaming\Physibel\BISCO12\ColourDatabase.bsc
- In TRISCO v15: C:\Users\...\AppData\Roaming\Physibel\TRISCO15\ColourDatabase.trc
- In SOLIDO v5: C:\Users\...\AppData\Roaming\Physibel\SOLIDO5\ColourDatabase.sld
- In Trisco2D v2: C:\Users\...\AppData\Roaming\Physibel\Trisco2D2\ColourDatabase.tr2
- In BISTRA v5: C:\Users\...\AppData\Roaming\Physibel\BISTRA5\ColourDatabase.bst